

MA 109: September 22

Domain and Range: Domain of Graphs

Start of Class

Instructor Information

Name:

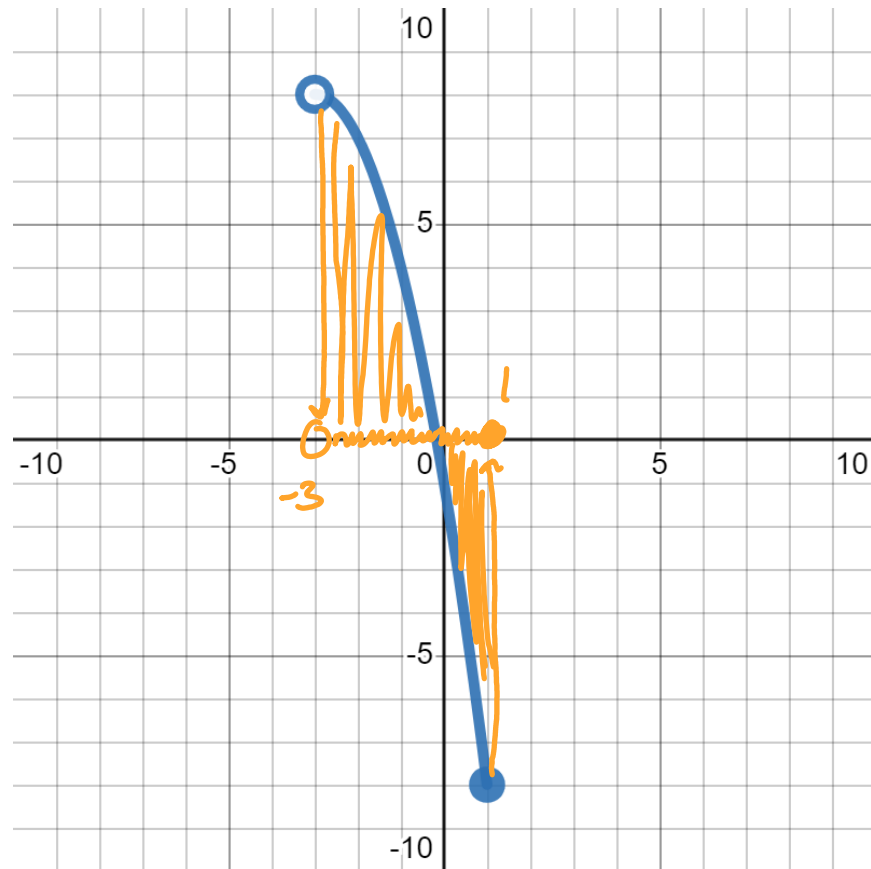
Email:

Office Hours:

Warm-up Questions

Notes

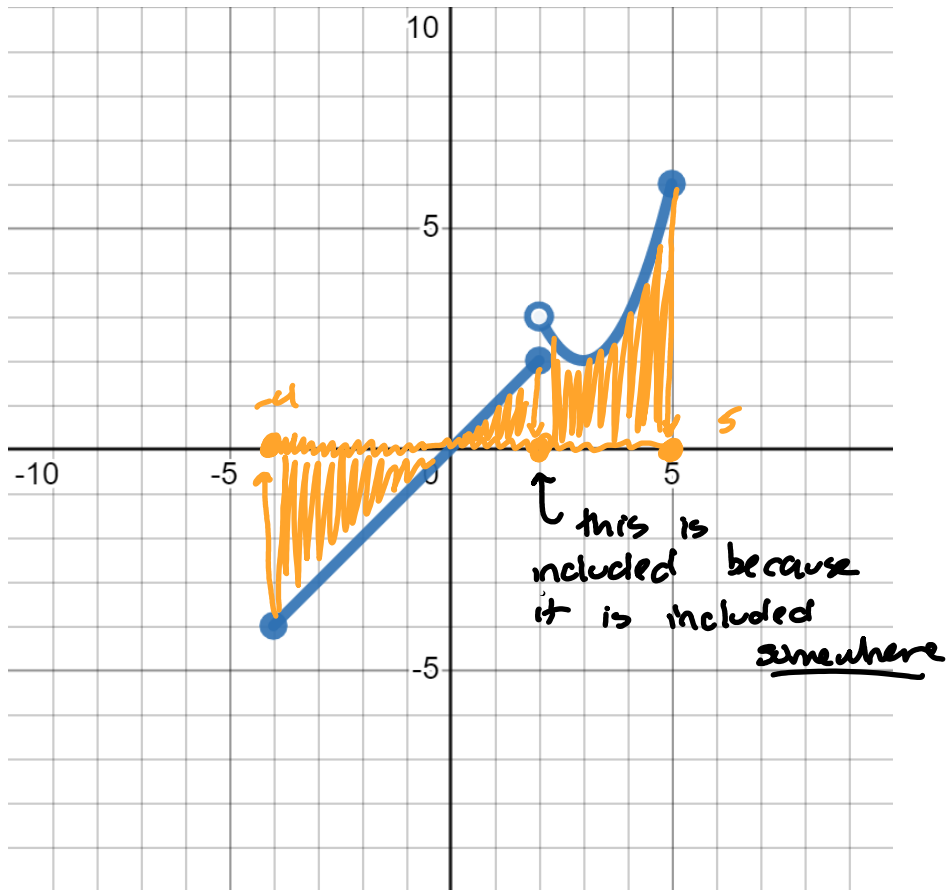
Example: Find the domain of the graph below. Write the answer using interval notation.



Domain: all covered x-values

domain: $(-3, 1]$

Example: Find the domain of the graph below. Write the answer using interval notation.



Since the hole gets covered, the domain

is all one piece:

$$[-4, 5]$$

End of Class

Write a summary of what you learned today:

What questions do you have about the material from today?

What do you need to do between now and the next class meeting?